

LODESTONE

Where home happens

Bruton Branch

01749 605099

bruton@lodestoneproperty.co.uk

www.lodestoneproperty.co.uk

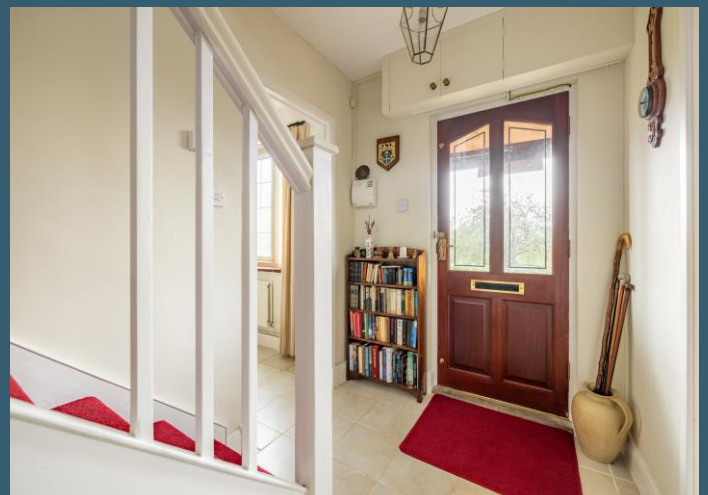


The Chimes

Ditcheat BA4 6RE

- Pretty cottage gardens.
- Well maintained throughout.

- Charming 3 bed detached village house
- 3 receptions, kitchen, utility, bathroom and ensuite.
- Large outbuilding, parking.



The Chimes is a lovely surprise.... The home was built probably in the late 1950's of red brick and is located on raised ground on the edge of this highly regarded village. The well planned, light accommodation comprises of a reception hall, cloakroom and stairs rising to the first floor. Leading off the hall are two well-proportioned, south facing reception rooms with fireplaces.

To the rear of the property is a wonderful modern, bright open plan sociable family kitchen to a conservatory with utility off. To the first floor are three well proportioned bedrooms, an ensuite bathroom and shower room. Externally, a driveway provides parking leading useful open fronted timber outbuilding. There is a gateway to the front of the property, with steps and pathway to main entrance. The garden is a treasure of colour with an abundance of flower and shrub borders creating a lovely cottage garden with relaxing seating areas to enjoy.

Situation

Ditcheat and its close neighbour Alhampton are both very popular villages and well known as home to Paul Nicholls's racing stables and Barbers farmhouse cheese. There is a good farm shop, an excellent primary school and a good pub, the Manor Inn. There is a thriving village hall and parish church and a the wonderful local Wraxall Vineyard. Local shopping can be found in nearby Castle Cary and Bruton, home to the now famous Hauser and Wirth gallery and At the Chapel restaurant. Also close is The Newt "one of the most exceptional country house hotels Britain has seen" according to the telegraph. The gardens are open to the public and allow visitors to walk in the amazing woodland gardens and eat in the various restaurants there. Other local attractions include Stourhead Gardens, Babington House, (Soho House's country mansion) and Longleat Safari Park. Transport links are excellent with Castle Cary's mainline railway station to London and the South West just five minutes' drive away.

Schools

Ditcheat has a well-regarded Primary School. Local independent schools include All Hallows and Hazlegrove prep schools, Millfield prep and senior, Downside and the Bruton schools. Local state schools include Ansford Academy, Sexey's Bruton and the Blue school in Wells.



Services:

Mains water, mains electricity, mains drainage. Heating:
gas central heating

Local Authority: Somerset Council

Council Tax band - E

Tenure - Freehold

EPC rating - D Directions

post code: BA4 6RE

What three words: enhances.motivates.shocked

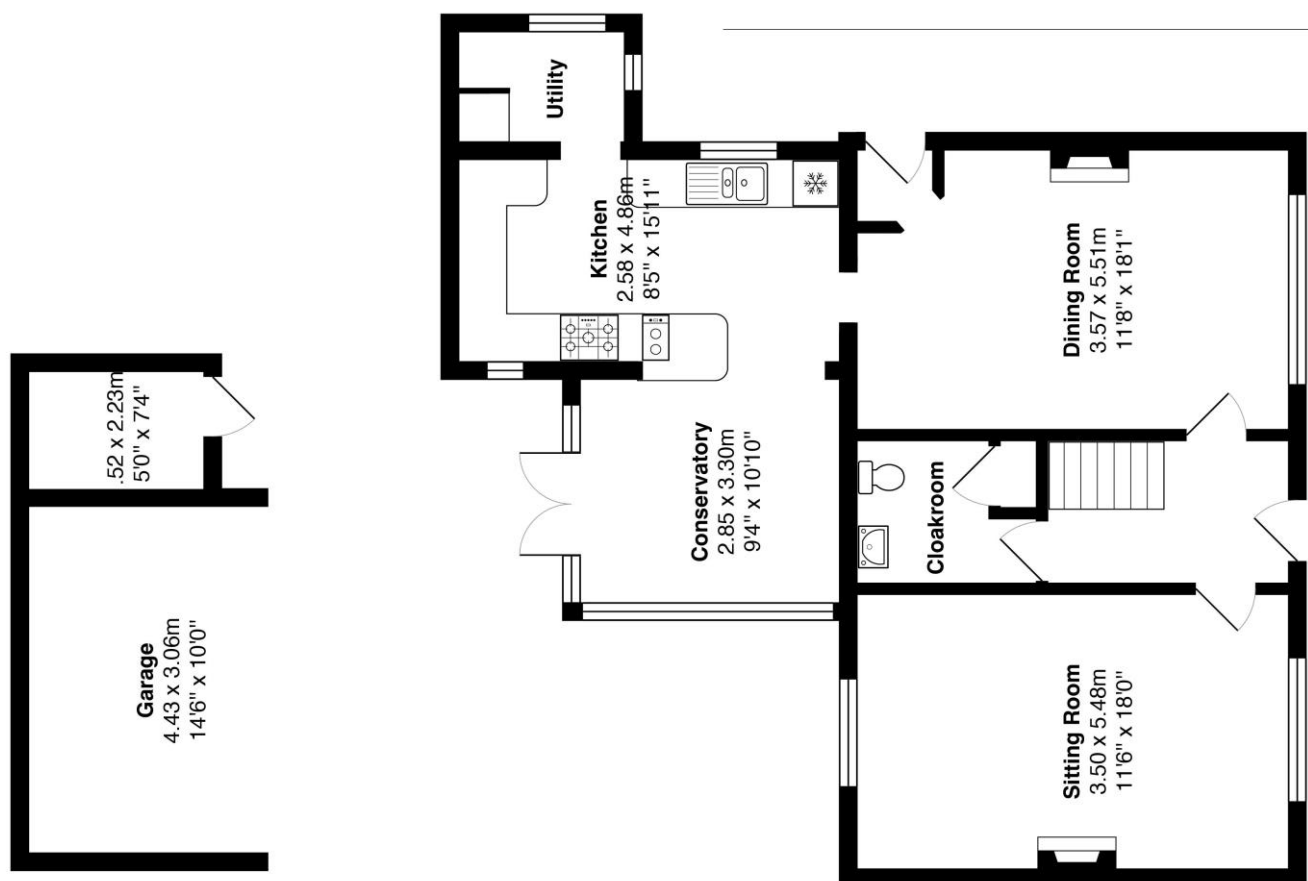
Viewing by appointment only



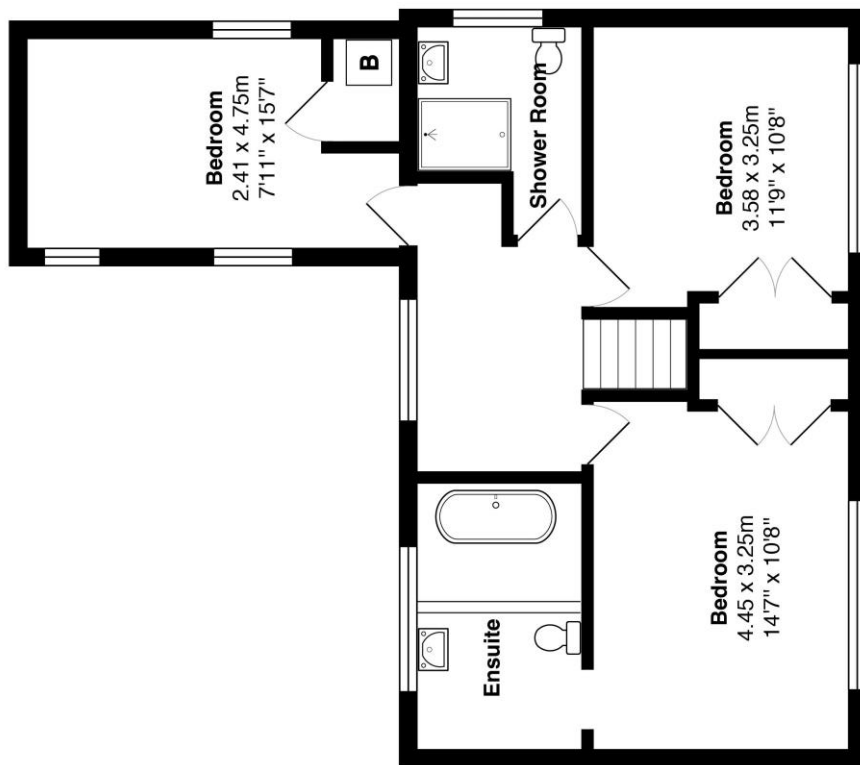
The Chimes, Ditchheat



Approximate gross internal floor area of main building - 142.5 m² / 1,534 ft²



Ground Floor
Area: 78.2 m² ... 842 ft²



First Floor
Area: 64.3 m² ... 692 ft²

Every care has been taken with the preparation of these details, in accordance with the **Consumer Protection from Unfair Trading Regulations 2008**, but complete accuracy cannot be guaranteed. If there is any point, which is of particular importance to you, please obtain professional confirmation. Alternatively, we will be pleased to check the information. These details do not constitute a contract or part of a contract. All measurements quoted are approximate. Photographs are provided for general information and cannot be inferred that any item shown is included in the sale. The fixtures, fittings & appliances have not been tested and therefore no guarantee can be given that they are in working order. No guarantee can be given with regard to planning permissions or fitness for purpose. Energy Performance Certificates are available on request.